

ITT

D3757SGL

Commercial Water

Goulds Pumps

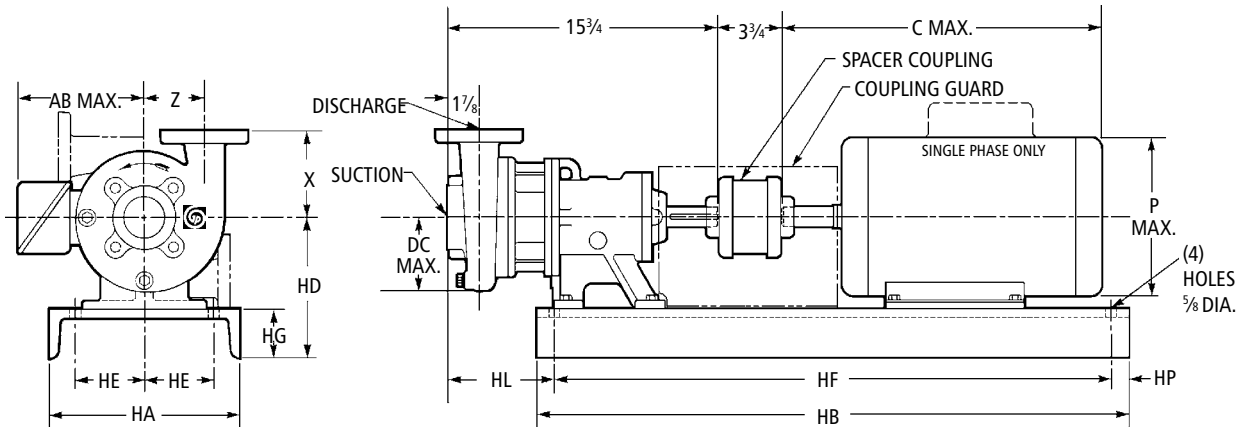
DIMENSION PRINT – SECTION 1

G&L Series MODEL 3757 S-Group

Stainless Steel Frame-Mounted Centrifugal Pumps

ENGINEERING DATA

Channel Steel Bedplate	Installation Drawing No. 276-22 Rev. 3 10/89	Certified for construction purposes <input type="checkbox"/> For Approval <input type="checkbox"/> For Record
Clockwise Rotation Viewed from Drive End		By _____ Signature _____ Date _____



WEIGHTS & DIMENSIONS – DETERMINED BY PUMP

Pump Size	150 lbs.		DC Max.	DD	R	X	Z	Wt. (lbs.)	Dimension "HL" Determined by Pump and Motor					
	Suct.	Disch.							Motor Frame Size					
									140	180	210	250	280	
1 1/2 x 2-6	2	1 1/2	4 1/4	3 3/8	2 1/2	5	3 1/2	67	8 1/2	7	3 1/4			
1 1/2 x 2-8			5 1/4	4 3/8		5 1/2								
2 x 3-7	3	2	5 3/4	4 3/4	3	6	4 1/4	82						

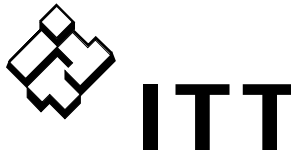
NOTE:
All pumps shipped in vertical discharge position. May be rotated in 90° increments. Tighten 3/8" - 16 casing bolts to 37 ft/lbs. torque.



www.goulds.com

Goulds Pumps is a brand of ITT Corporation.

Engineered for life



AVAILABLE MOTOR AND BEDPLATE WEIGHTS AND DIMENSIONS

Motor Frame	HP @ 3500 RPM				HP @ 1750 RPM				AB Max.	C Max.	P Max.	Wt. Max.	Bedplate Data							
	1 Phase		3 Phase		1 Phase		3 Phase						HA	HB	HD	HE	HF	HG	HP*	Wt. (lbs.)
	ODP	TEFC	ODP	TEFC	ODP	TEFC	ODP	TEFC												
143T			1½	1½	1	1	1	1	5¼	13¾	6⅝	45	10	28	8	3¾	24	2¾	¾	48
145T	2	2	3	2	1½	1½	1½ or 2	1½ or 2		14¼										
182T	3	3	5	3	2	2	3	3	16⅝	74										
184T	5	3, 5	7½	5	3 or 5	3	5	5	18⅝	95										
213T			10	7½			7½, 10	7½	7⅜	18	9⅝	116	12	31	8¼	4¼	29	3	1	65
215T			15	10						19⅝		136								
254T			20	15					10⅝	21⅝	13	266	13	42	10¼	5¼	38½	4	1¾	110
256T			25	20						23⅜		264								
284TS/T			30	25					12⅝	24⅞	15	392	15	44	10½	5¾	40½	3½		124
286TS/T			40	30						26⅝		432								

NOTE: Dimensions and weights vary with manufacturers. Dimensions in inches and weights in lbs. * "HP" Dimensions at motor end only.



ITT
 2881 East Bayard Street, Seneca Falls, NY 13148
 Phone: (315) 568-7123 • Fax: (315) 568-7973
www.goulds.com

Goulds Pumps is a registered trademark of ITT Corporation. ITT, the Engineered Blocks Symbol and Engineered for Life are registered trademarks of ITT Manufacturing Enterprises, Inc.